

Riley-Day Syndrome (Familial Dysautonomia) with Neurotrophic Keratopathy

Category(ies): Cornea, Inherited Eye Disease

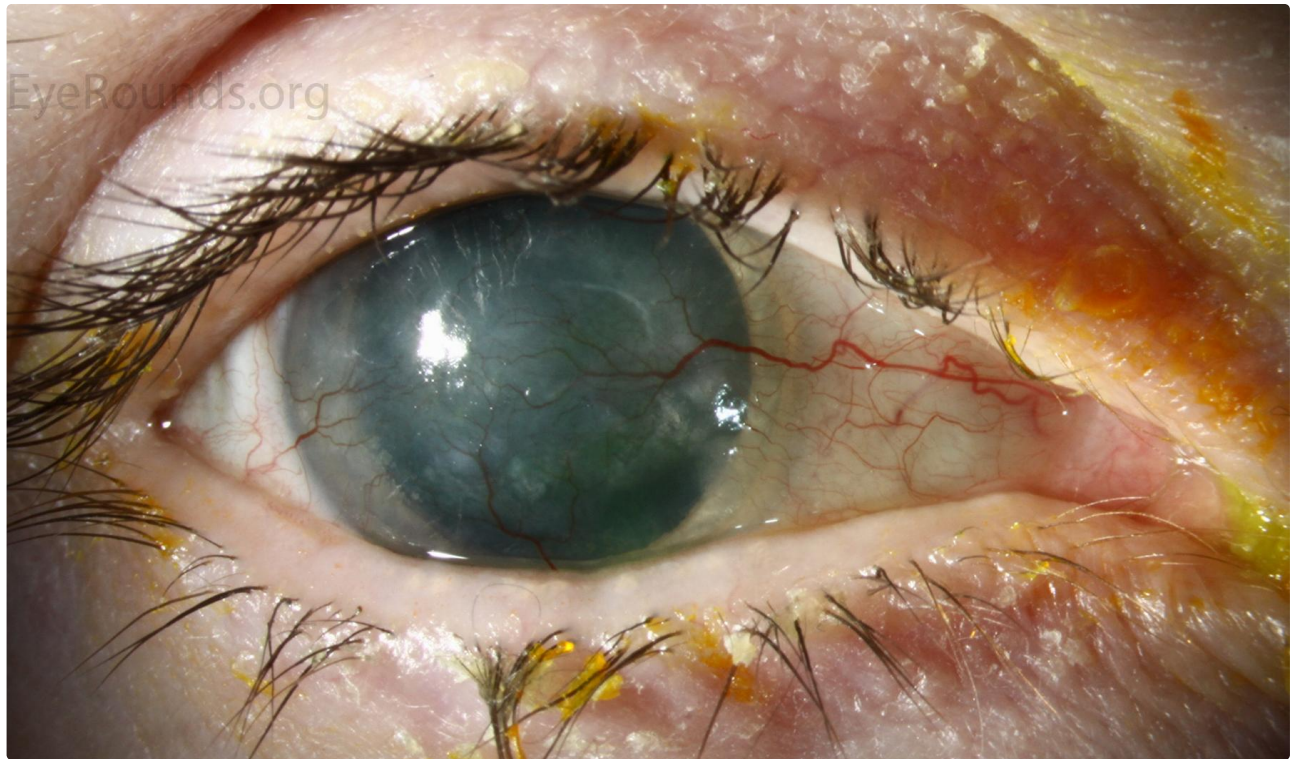
Contributor: [Jesse Vislisel, MD](#)

Photographer: Cindy Montague, CRA



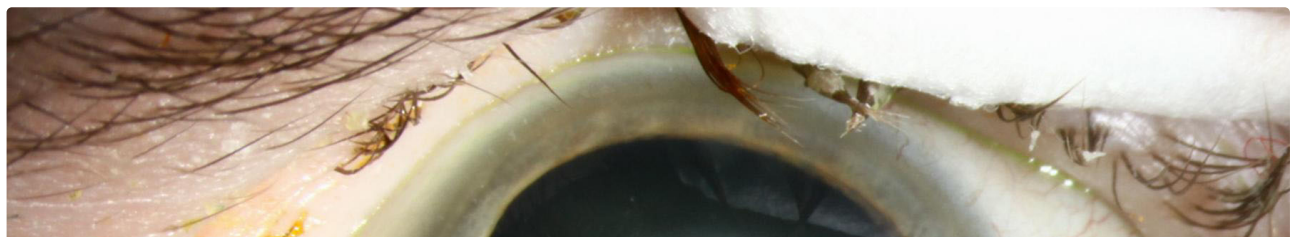
Riley-Day syndrome (familial dysautonomia) is an inherited condition causing autonomic nervous system dysfunction that follows an autosomal recessive inheritance pattern. Ocular findings include decreased corneal sensation, decreased tear production, light-near dissociation, and poorly-reactive pupils. This patient with Riley-Day syndrome has neurotrophic keratopathy with complete conjunctivalization of the right eye and dense stromal scarring of the left eye.

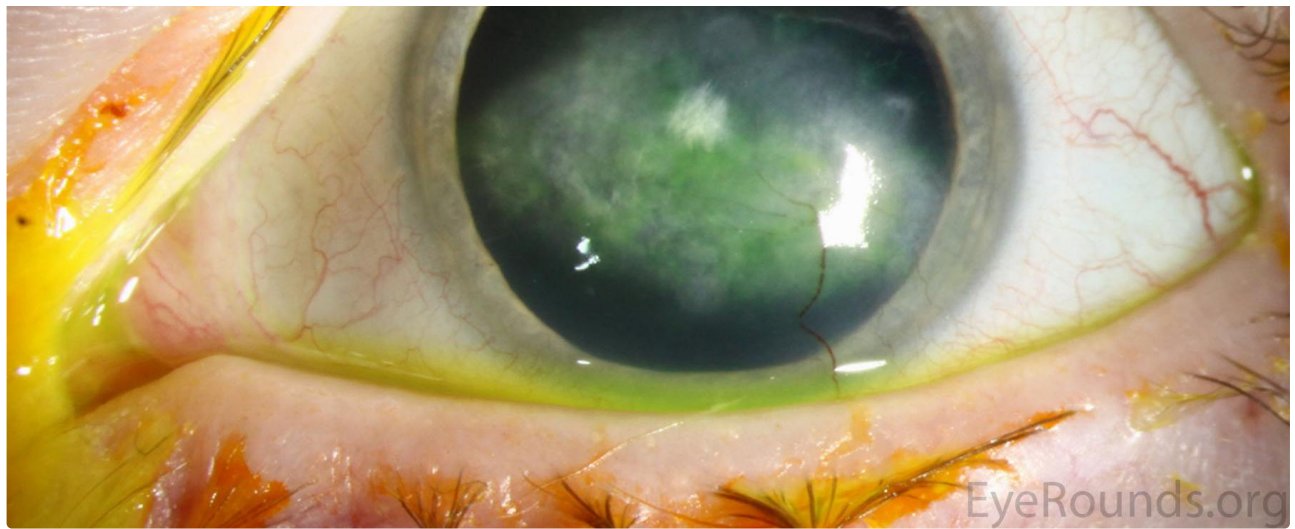
OMIM #223900



Enlarge

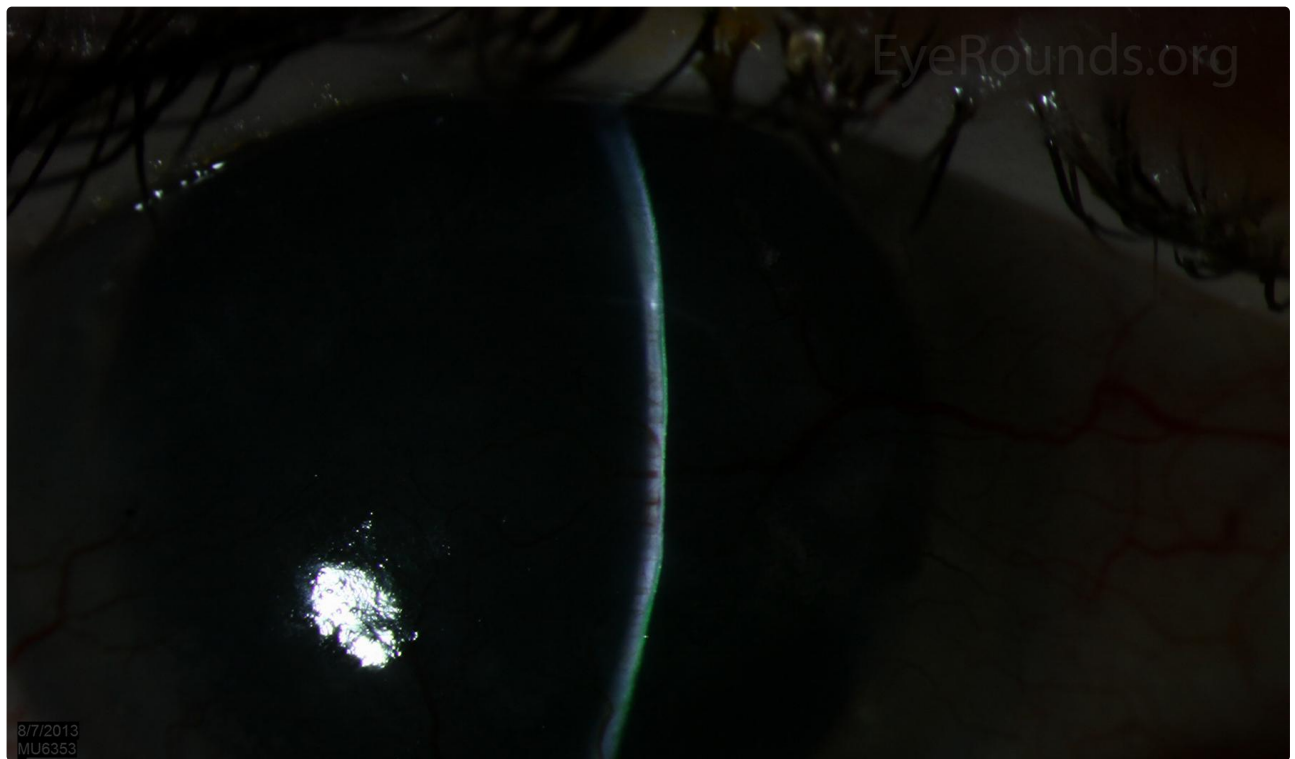
Download





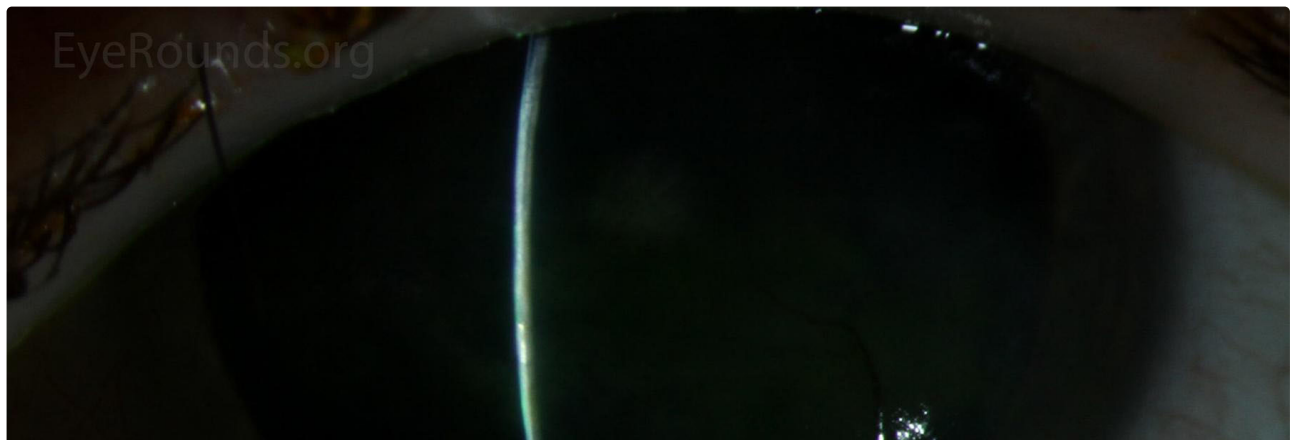
[Enlarge](#)

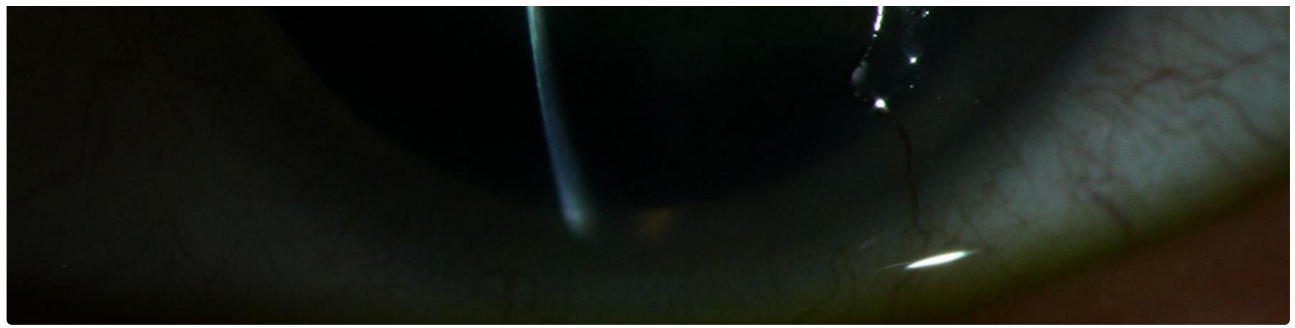
[Download](#)



[Enlarge](#)

[Download](#)





 [Enlarge](#)

 [Download](#)

Image Permissions:



Ophthalmic Atlas Images by EyeRounds.org, The University of Iowa are licensed under a [Creative Commons Attribution-NonCommercial-NoDerivs 3.0 Unported License](https://creativecommons.org/licenses/by-nc-nd/3.0/).

Address

University of Iowa
Roy J. and Lucille A. Carver College
of Medicine
Department of Ophthalmology and
Visual Sciences
200 Hawkins Drive
Iowa City, IA 52242

[Support Us](#)

Legal

Copyright © 2019 The University of
Iowa. All Rights Reserved
[Report an issue with this page](#)
[Web Privacy Policy](#) |
[Nondiscrimination Statement](#)

Related Links

[Cataract Surgery for Greenhorns](#)
[EyeTransillumination](#)
[Gonioscopy.org](#)
[Iowa Glaucoma Curriculum](#)
[Iowa Wet Lab](#)
[Patient Information](#)
[Stone Rounds](#)
[The Best Hits Bookshelf](#)

EyeRounds Social Media

Follow



Receive notification of new cases,
[sign up here](#)
[Contact Us](#)
[Submit a Suggestion](#)